

Figure 1: Raw count rate curves recorded by the detector unit no. 1 of the GRB payload on board of VZLUSAT-2.

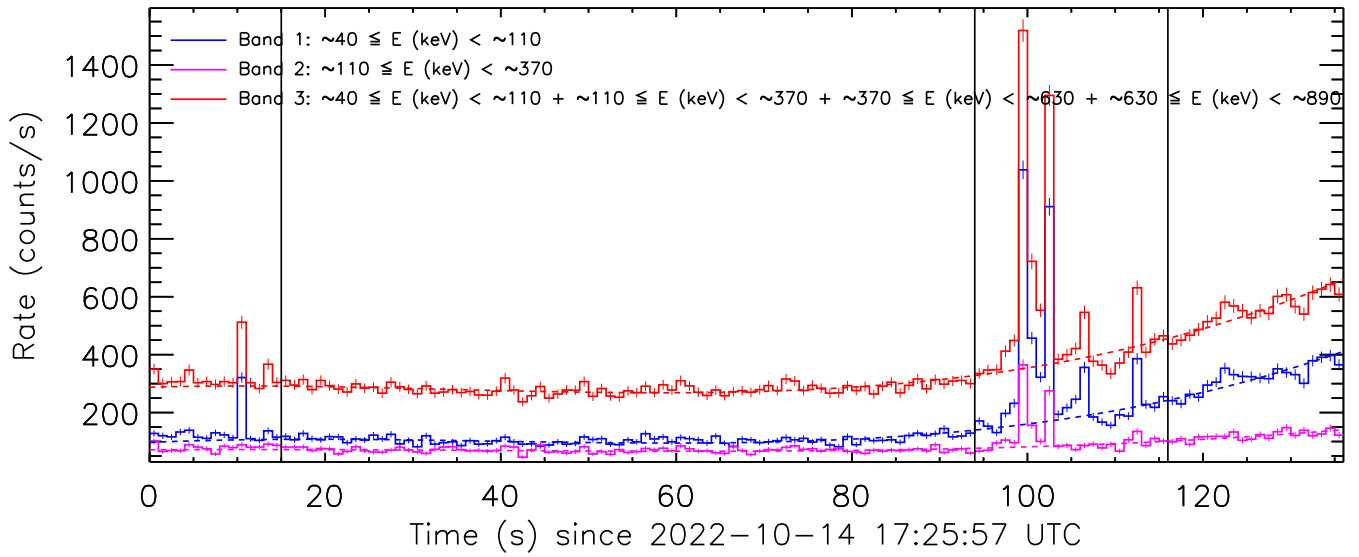


Figure 2: Background fit to the raw count rate curves from the detector unit no. 1 of the GRB payload on board of VZLUSAT-2 by a third order polynomial. Pre-burst and post-burst intervals which were used for the background fit are delimited by the vertical solid lines.

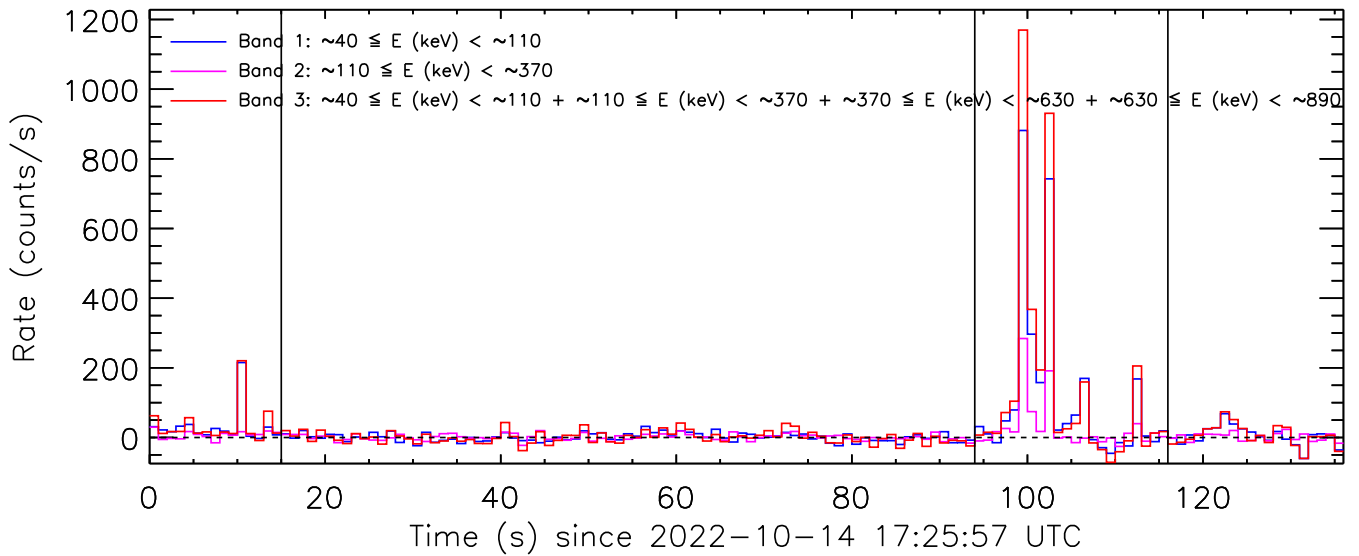


Figure 3: Background-subtracted count rate curves from the detector unit no. 1 of the GRB payload on board of VZLUSAT-2.

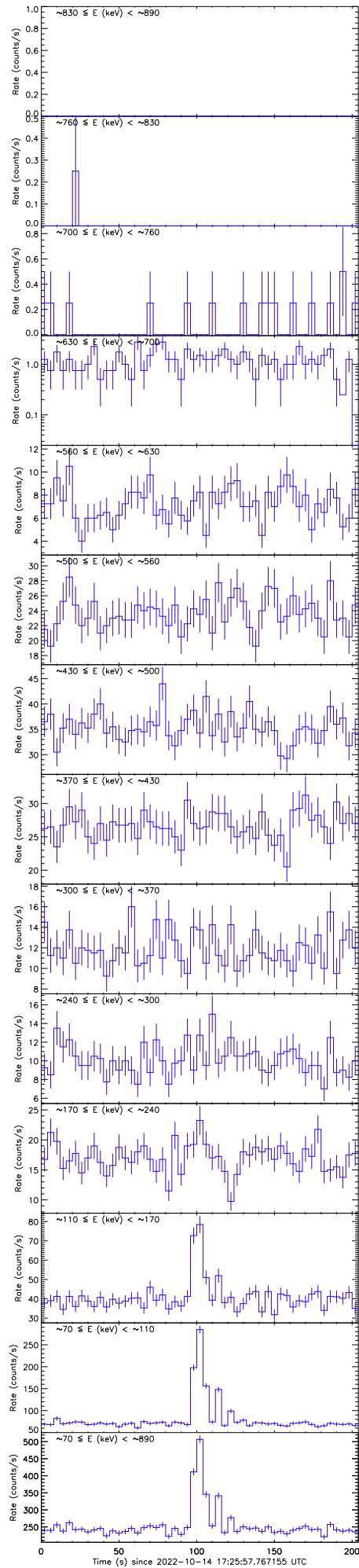


Figure 4: Raw count rate curves recorded by GRBAAlpha.

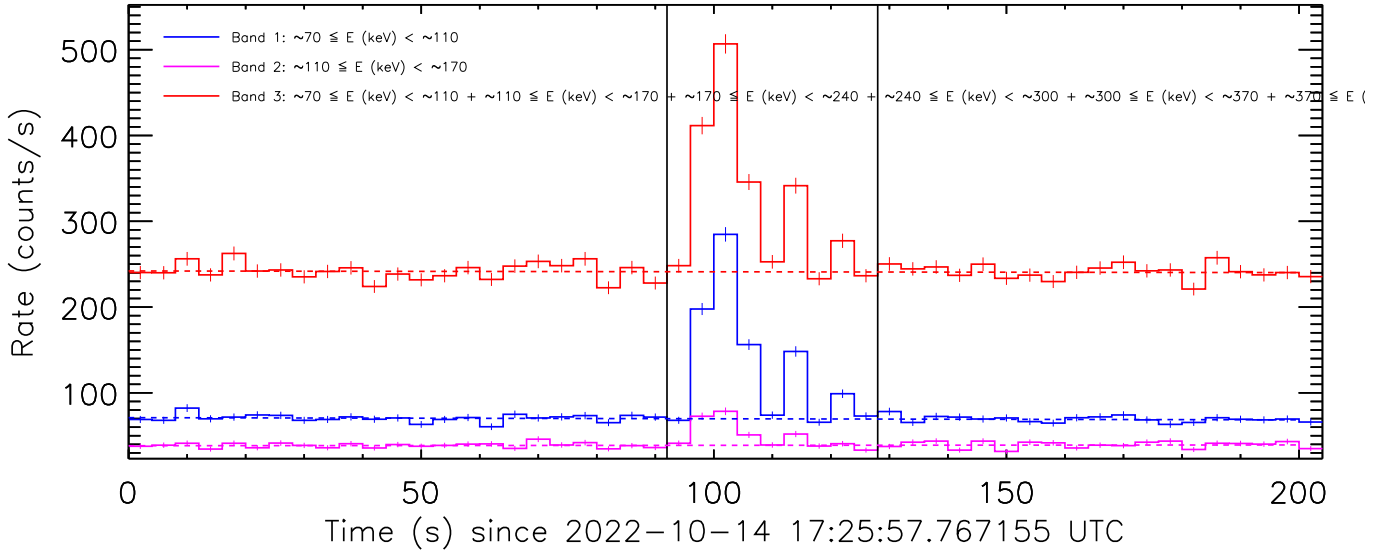


Figure 5: Background fit to the raw count rate curves from GRBAlpha by a linear function. Pre-burst and post-burst intervals which were used for the background fit are delimited by the vertical solid lines.

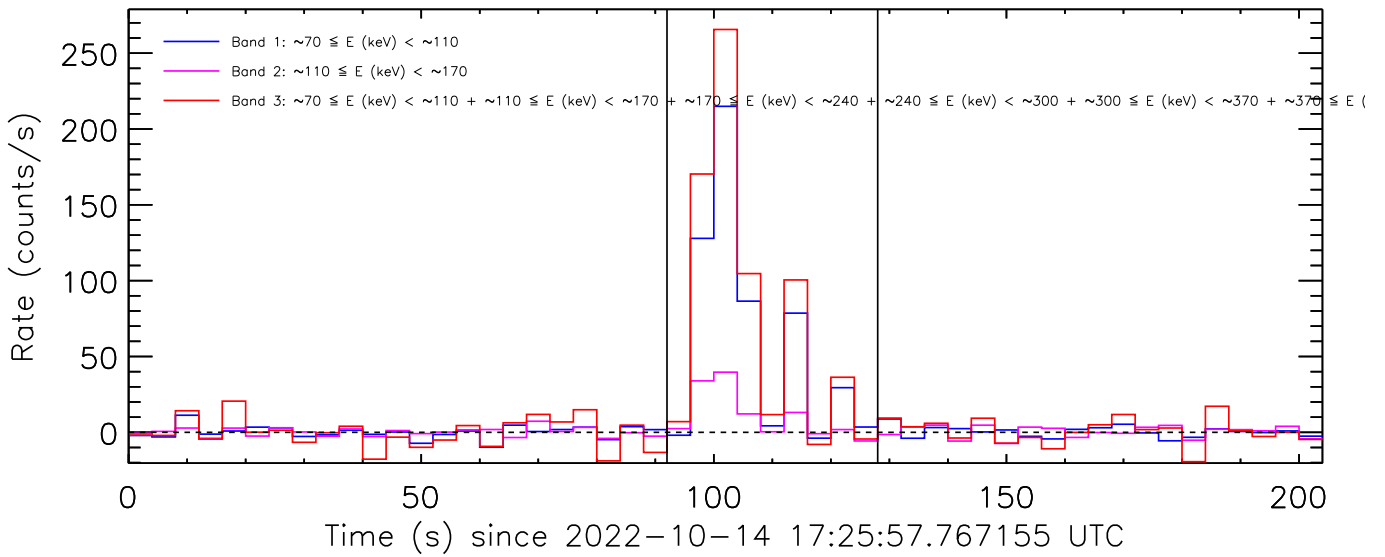


Figure 6: Background-subtracted count rate curves from GRBAlpha.

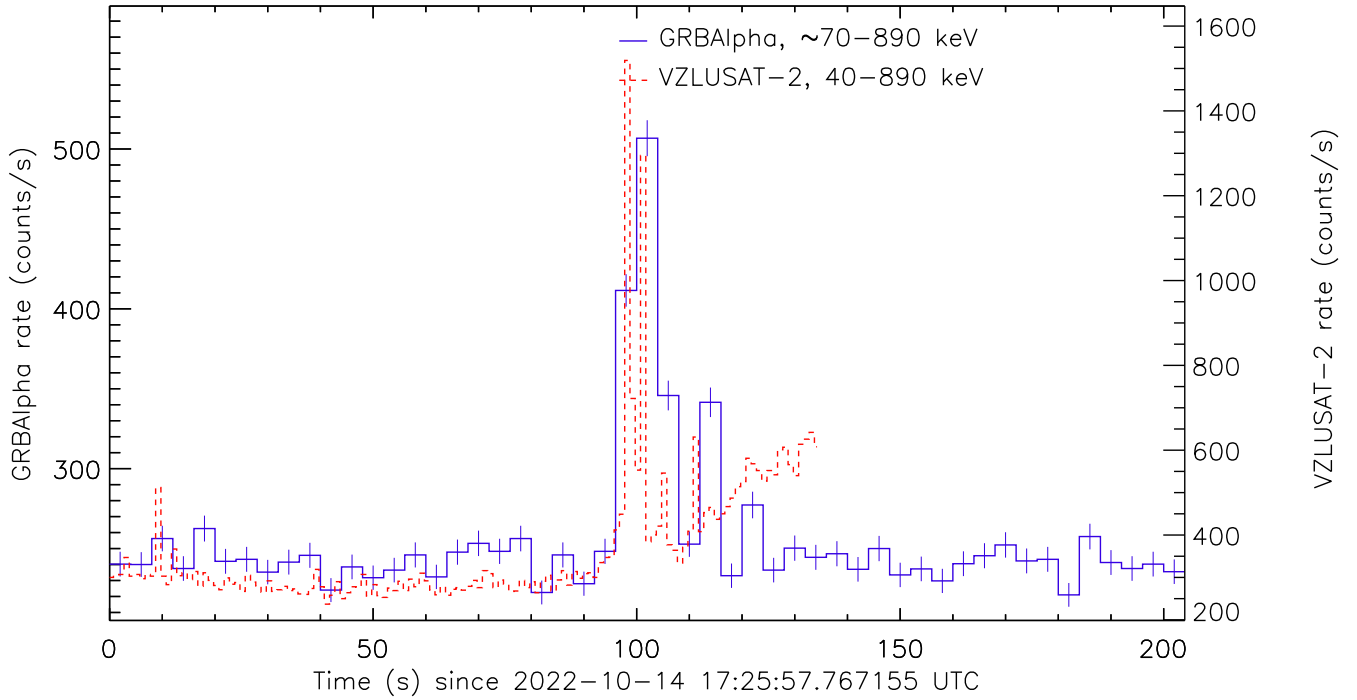


Figure 7: Raw count rate curve recorded by GRBAAlpha compared with the one recorded by the detector unit no. 1 of GRB payload on board of VZLUSAT-2.

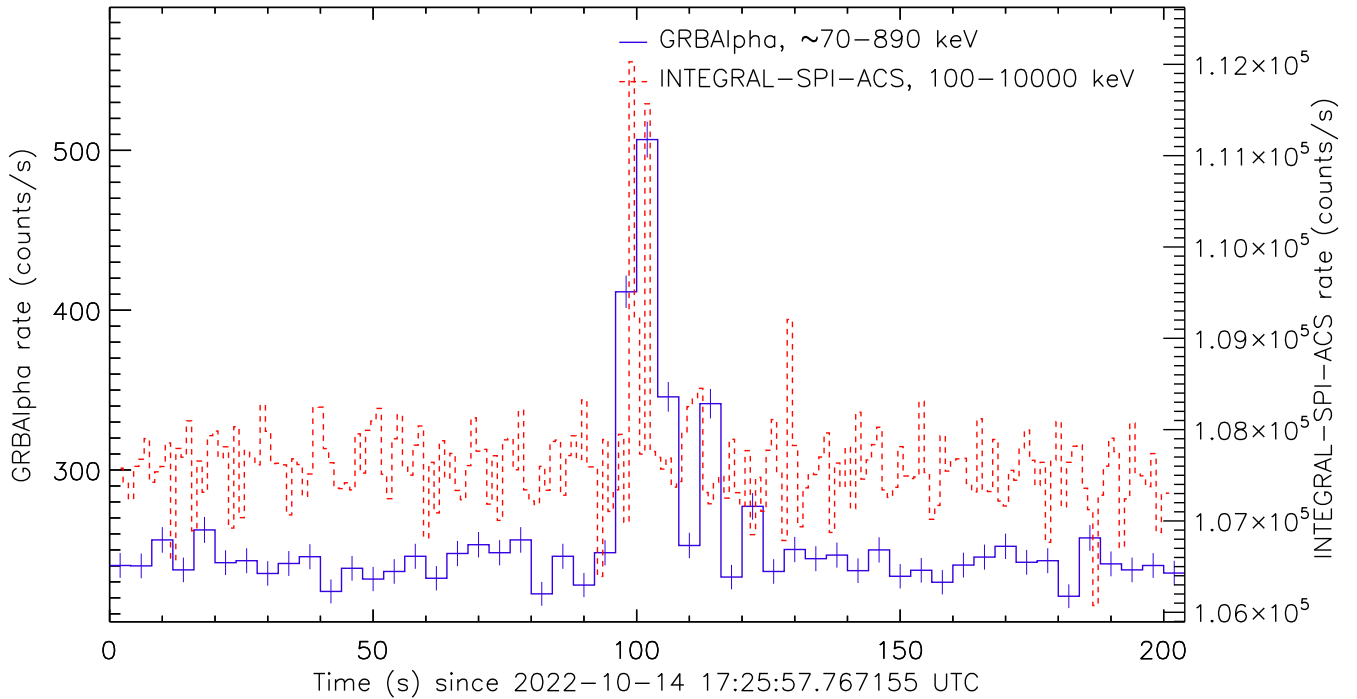


Figure 8: Raw count rate curve recorded by GRBAAlpha compared with the one recorded by INTEGRAL/SPI-ACS.